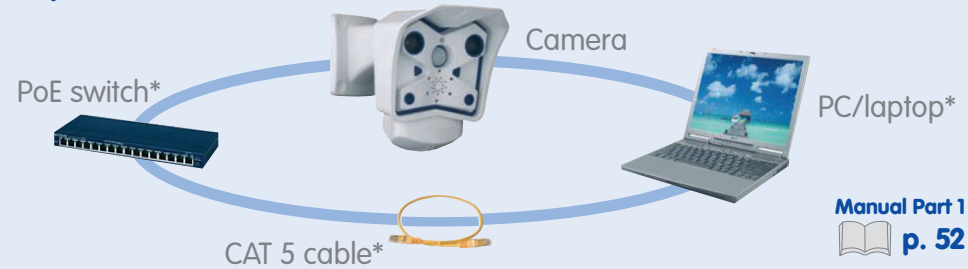


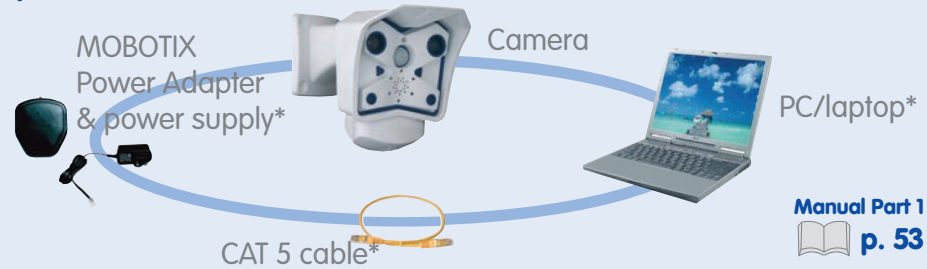
# MOBOTIX M12 Quick Installation



## Prerequisites (MOBOTIX Camera, Standard PC, PoE Switch, CAT 5 Cable)



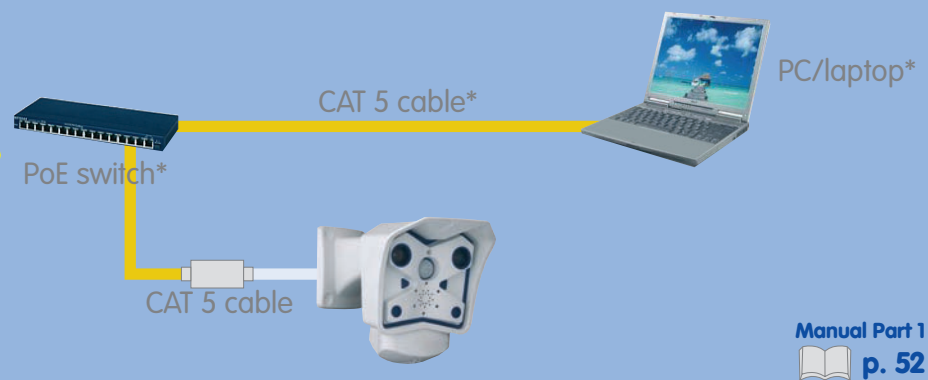
## Prerequisites Without PoE Switch



## Prerequisites (Troubleshooting)

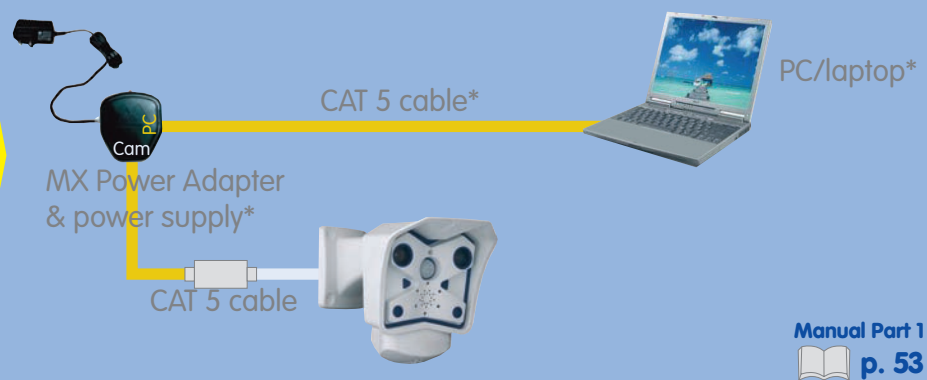
- Computer & switch need to have 10/100 Mbps network interfaces
- Using a PoE switch is the simplest method for connecting the camera
- Use the MX Power Adapter if a PoE switch is not available
- Order MOBOTIX accessories from [www.mobotix.com](http://www.mobotix.com) or by phone (toll-free) 1-888-MOBOTIX

## Connecting the Camera (via PoE Switch)



\*Not part of the standard delivery

## Connecting the Camera (Direct Connection via MX Power Adapter)



\*Not part of the standard delivery

## Connecting the Camera (Troubleshooting)

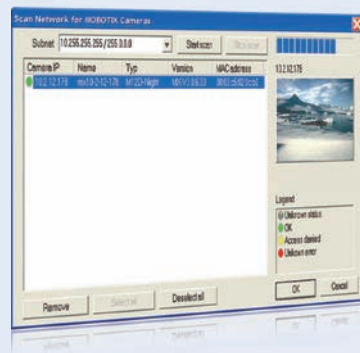
### Using PoE switch:

- Does the PoE switch support the IEEE 802.3af PoE standard?
- Is the camera cable connected to a PoE port at the switch?

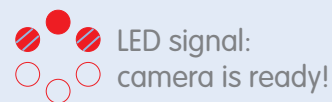
### Using an MX Power Adapter (NPA):

- Is the computer in the same subnet as the camera?
- Is the Power Adapter connectd properly?  
(power supply in the "Power" connector, computer in the "PC" connector, camera in the "Camera" connector)

## The First Image in the Camera (in MxControlCenter)

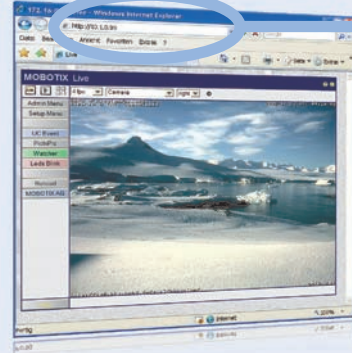


- Free-of-charge download from [www.mobotix.com](http://www.mobotix.com)
- Install application from MSI file
- MxControlCenter automatically searches the cameras

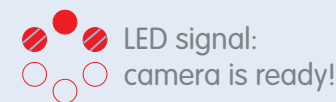


Manual Part 1 p. 64

## The First Image in the Camera (in a Browser on Windows/Mac/Linux)



- Enter your camera's IP address in the browser address bar
- The IP address of your camera is printed on a sticker on the camera housing



Manual Part 1 p. 61

## The First Image in the Camera (Troubleshooting)

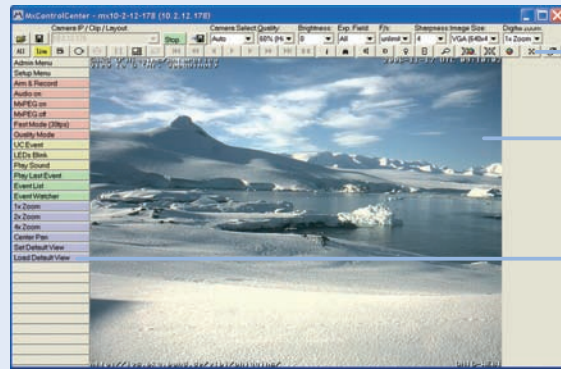
### In MxControlCenter (MxCC):

- Downloaded MxControlCenter successfully from [www.mobotix.com](http://www.mobotix.com)?
- Installation completed successfully?
- Camera search in the subnet found the cameras?
- For more information, see p. 64 in the Camera Manual and in the MxControlCenter User Manual

### Display in a browser (Windows/Mac/Linux):

- IP address correctly entered in the browser address field?
- Firewall properly configured and camera port 80 reachable?

## User Interface (MOBOTIX MxControlCenter)



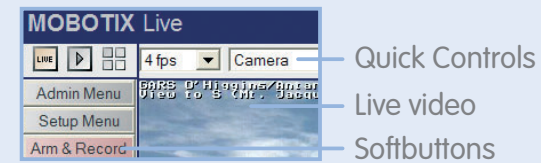
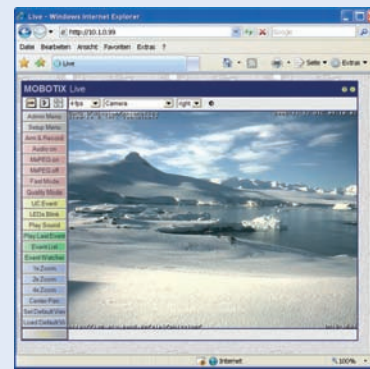
Controls

Live video display with background layouts

Camera softbuttons

Manual Part 2  
p. 11

## User Interface (MOBOTIX Camera)



Quick Controls

Live video

Softbuttons

Live

Event player

MultiView

Manual Part 2  
p. 8

## Basic Settings (MOBOTIX MxControlCenter)



Open video sources



Store configuration



Start/stop video streams (live and recorded)



Toggle alarm list on/off



Toggle Layout Editor on/off



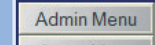
Toggle background image mode on/off

MxCC User Manual  
p. 32

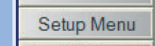
## Basic Settings (MOBOTIX Camera Softbuttons)



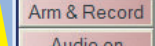
Live, event player, MultiView (Quad, events, etc.)



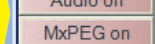
**Admin Menu controls system configuration**



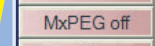
**Setup Menu controls event detection and recording**



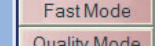
**Arm & Record activates internal event storage**



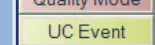
**Audio on activates the camera microphone**



MxPEG Codec on (video and audio display/recording)



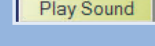
MxPEG Codec off (single JPEG images)



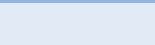
**Fast Mode shows fast video with up to 30 F/s**



**Quality Mode shows best image quality**



Manually triggers an event



Manually flashes the camera LEDs



**Plays back a sound on the camera speaker**

Manual Part 2  
p. 16

## MOBOTIX (Cost Benefits)

- 1 Increased resolution reduces amount of cameras needed
- 2 Reduced installation costs at any distance
- 3 Intelligent recording technology reduces required storage
- 4 Event-controlled image rate minimizes storage costs
- 5 No additional power or heating required
- 6 Backup power requirement reduced by 8 times
- 7 Robust and practically maintenance-free
- 8 No software and no license costs
- 9 Unlimited scalability and high return on investment
- 10 Additional functions and other extras included

## MOBOTIX (Technical Advantages)

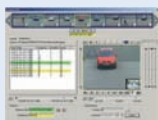
- 1 Progressive-scan instead of half-frame blur
- 2 Sun and backlight compensation
- 3 Dual camera technology: 2-in-1
- 4 Long-term, high-performance Terabyte recording included
- 5 Simultaneous recording, event search and live viewing
- 6 Very low network load
- 7 Bridging of recording during network failures
- 8 Day & night maintenance free
- 9 Audio and SIP telephony
- 10 MxControlCenter software included

## Advanced Settings (MOBOTIX MxControlCenter)



**Define background layouts**

- Cameras can be positioned anywhere on a freely selectable background (floor plan, world map, etc.)



**Event search**

- Advanced search features according to events recorded by the cameras



**Update camera software**

- Update assistant can easily update many cameras at once

## Advanced Settings (MOBOTIX Camera)



**Display logos in the live images**

- Use the dialogs in **Admin Menu > Logos and Image Profiles** to configure the logo generator



**Access control**

- Use the dialogs in **Admin Menu > Security** to configure users, groups and the corresponding access rights



**External storage on file server**

- Configure external storage in **Admin Menu > LAN Image Storage**

## MOBOTIX (Contact)

MOBOTIX AG  
Luxemburger Strasse 6  
D-67657 Kaiserslautern

Tel: +49 (0) 631 3033 103  
Fax: +49 (0) 631 3033 190  
sales@mobotix.com  
www.mobotix.com

Download the manuals from  
www.mobotix.com/support/manuals

Security-Vision-Systems

